

Ardillaun Road, Galway

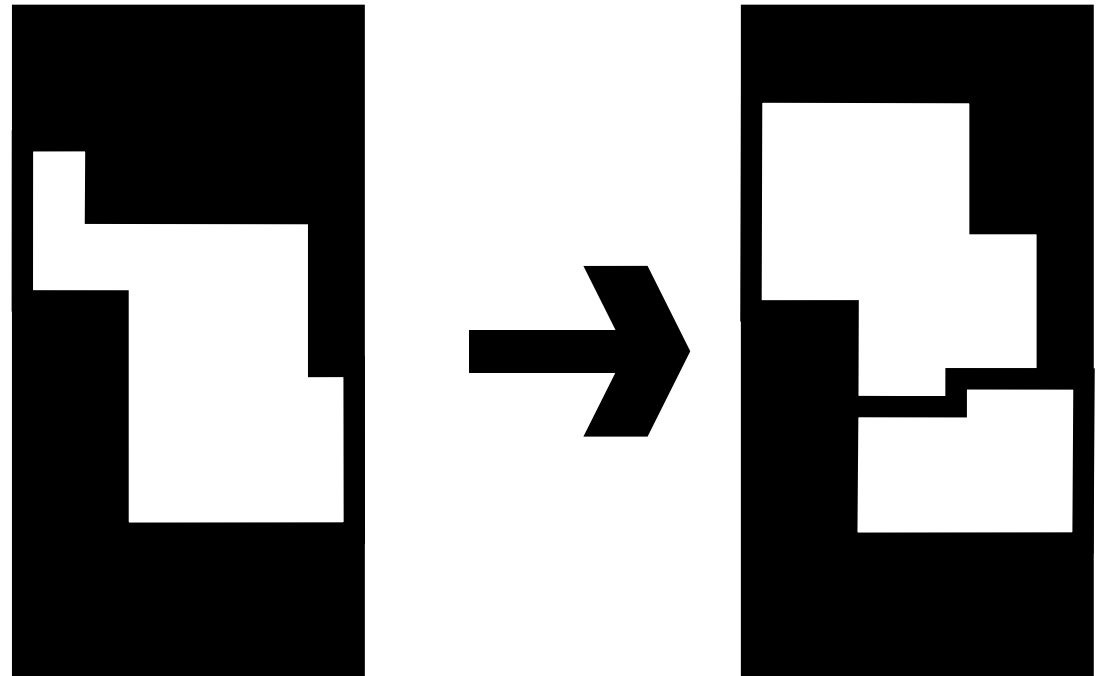
Extension to and reconversion of a house in the suburbs of Galway, Ireland.

The existing bungalow is cluttered and contains many small and dark rooms the spaces are opened up and extended to the rear. A large open split level space contains the kitchen dining and living spaces and is connected to a sheltered rear patio. The rear house also contains a master en-suite bedroom, another 2 bedrooms, bathroom and a shower room.

The front of the house is converted to a small apartment intended for rental

The building will begin in February 2008

new typology



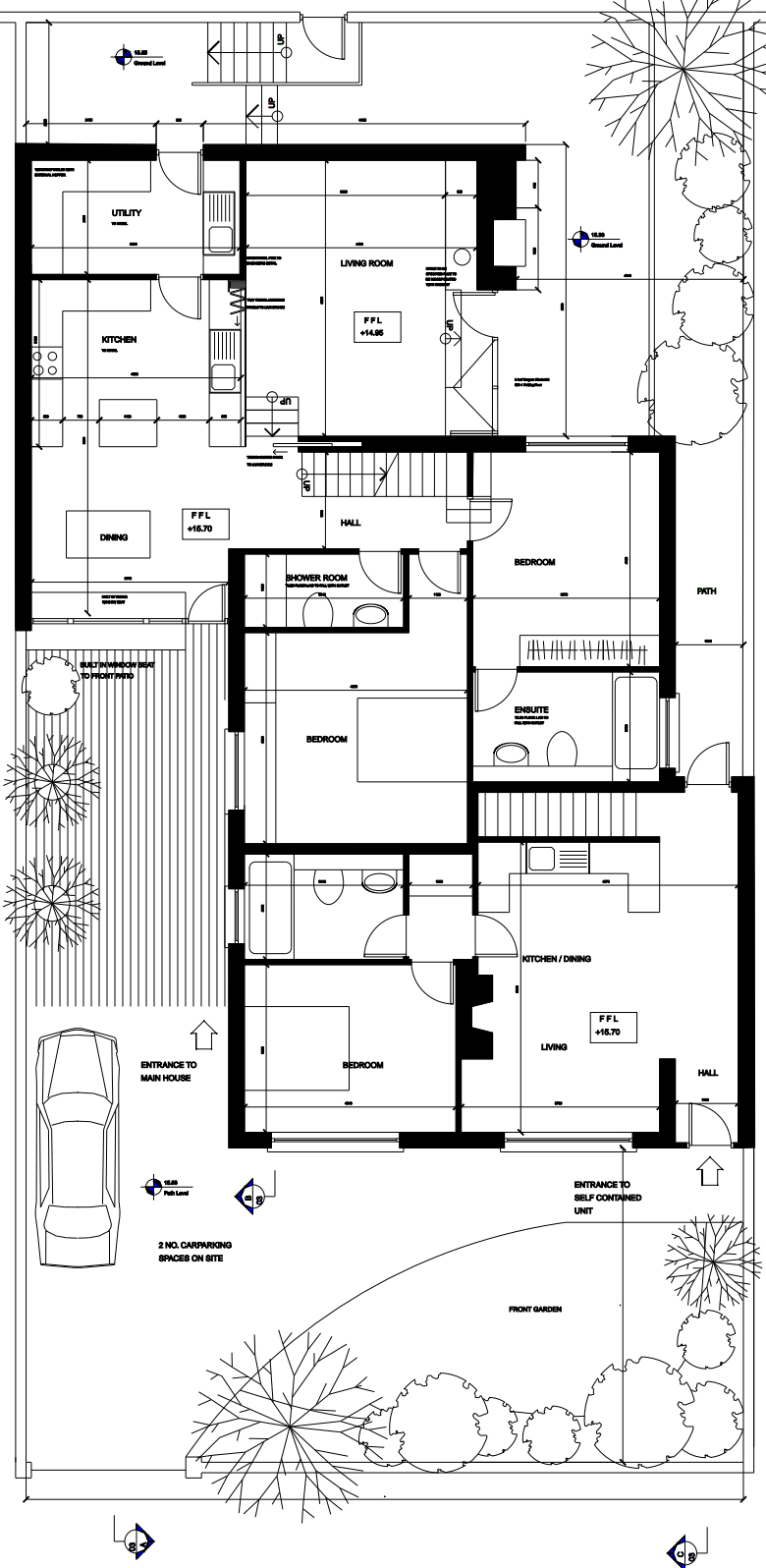
14.7
Existing Road Level

REAR LANE

Existing connection to public foul
and surface water sewer

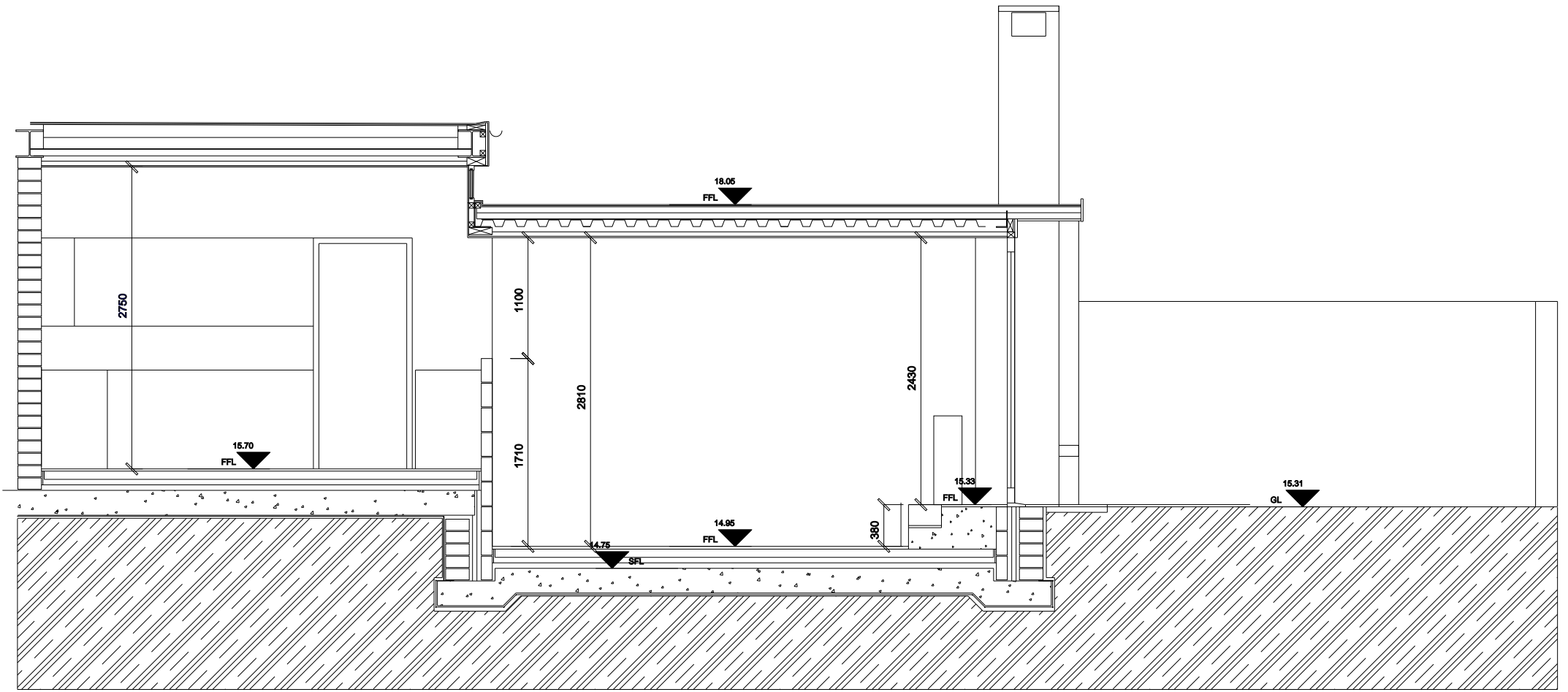


EXISTING OPEN TO
REAR LANE



15.4
Existing Road Level

ARDILAUN ROAD



SECTION F-F