



winter and summer gardens



public functions to street housing with gardens



openings and access

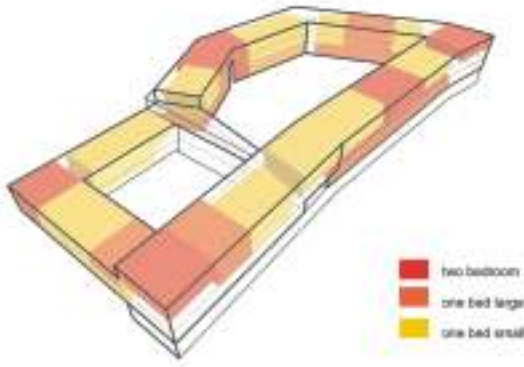


new city block



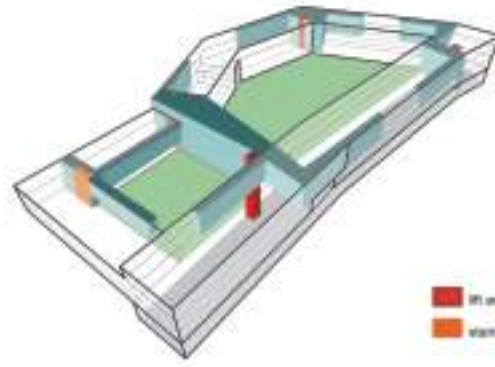
section b-b 1:250

apartment types



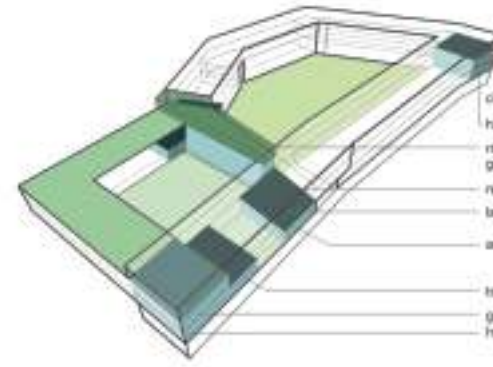
- two bedroom
- one bed large
- one bed small

circulation



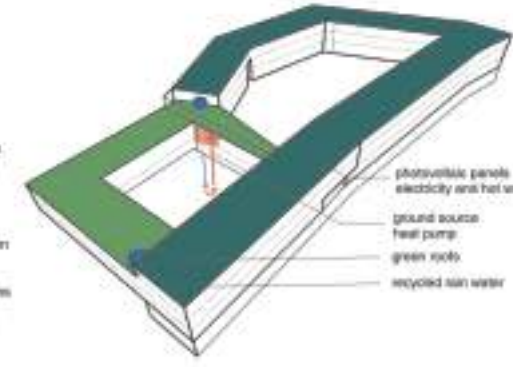
- lift and stairs
- stairs

public functions

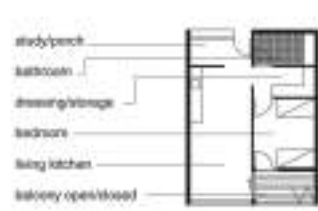


- cinema
- healthcare
- roof gardens
- greenhouse
- restaurant
- laundry
- admin/kitchen
- training rooms
- gym
- hairdresser

renewable energy



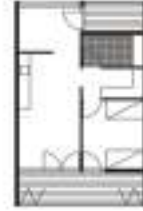
- photovoltaic panels
- electricity and hot water
- ground source heat pump
- green roofs
- recycled rain water



winter garden



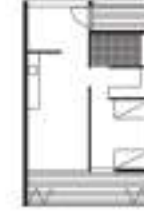
courtyard ground floor



street side ground floor



gallery



gallery large



two bedroom



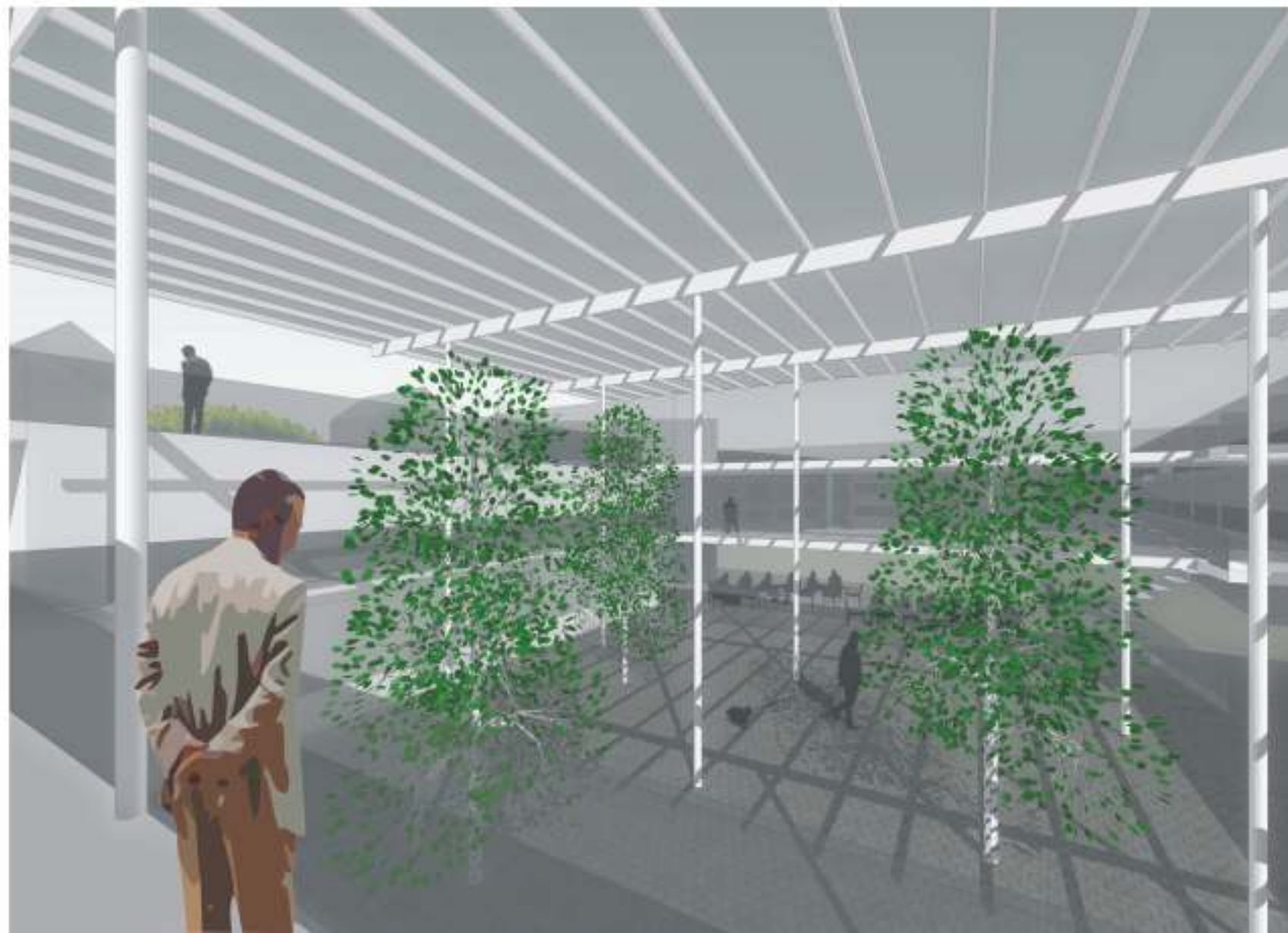
apartment types

The whole complex has been designed to allow for disabled access throughout. In the basement parking garage a 6.9m structural grid is used, this dimension accommodates two disabled parking spaces. This dimension also forms the basis for the apartments above.

All apartments are based on a single type that varies throughout the plan giving a total of six different basic apartments. A simple layout minimises circulation spaces allowing disabled access to all apartments. All apartments are dual aspect to achieve maximum daylight with a large open kitchen/living space gaining views to both sides.

Large balconies are provided with glass screens to close the space during cold or element weather the balconies can be accessed from both the living room and the bedrooms. A naturally ventilated bathroom and large walk-in closet are also provided.

In the street level and gallery apartments porches are provided as transition zones between the public and private. Circulation occurs at a number of points in the plan this ensures a good transition from the public spaces to the semi public and onto the private. This system limits gallery access to a maximum of four apartments per gallery.



view B : winter garden