

069 Urban Deltas PRINT



Deltas and urbanisation are inseparable. A map of population density across the world shows that the greatest concentrations of people can be found in deltas. Besides fresh water and fertile soils, deltas offer excellent possibilities for water transport. These factors gave deltas a head start in forming urban settlements, many of which have grown to become the metropolises of the twenty-first century. At the same time, deltas are dangerous places to live in. The wide fluctuation in river discharges make flooding likely, and so urban development in deltas is always accompanied by a fight against the water: dikes and dams are built to protect the inhabitants against flooding.

Place	World
Team	Must
Comissioner	Ministry of Transport, Public works, and Water Management/RIZA
Size	-
Year of design	2003
Year of construction	-
Product	Advice, research

Many urbanised deltas are caught in a vicious circle. The initial settlements were so successful that they grew rapidly, whereas their capacity to absorb and tolerate the dynamism and unpredictability of the water diminished. The growing pressure on the available land drove town and delta into each other's arms. Urban growth and water management are not separate tasks, but jointly determine the quality of life.

The *Rode delta's* study illustrates twenty-two of the world's urbanised deltas and lists the complex and sometimes unexpected relations between water and the city. The study also provides a starting point for a sustainable *and* challenging scenario for the urbanised Rhine–Scheldt delta.

See also

PRODUCTS

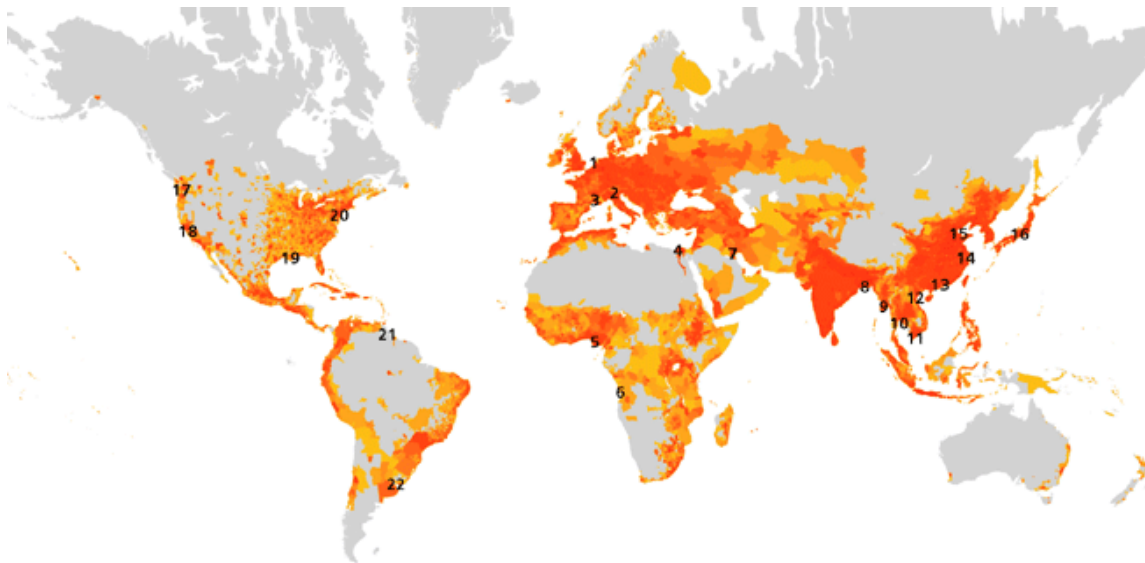
[Advice](#)
[Research](#)

DICTIONARY

[Love](#)
[Opinion making](#)
[Urbanity](#)
[Water](#)

LOCATIONS

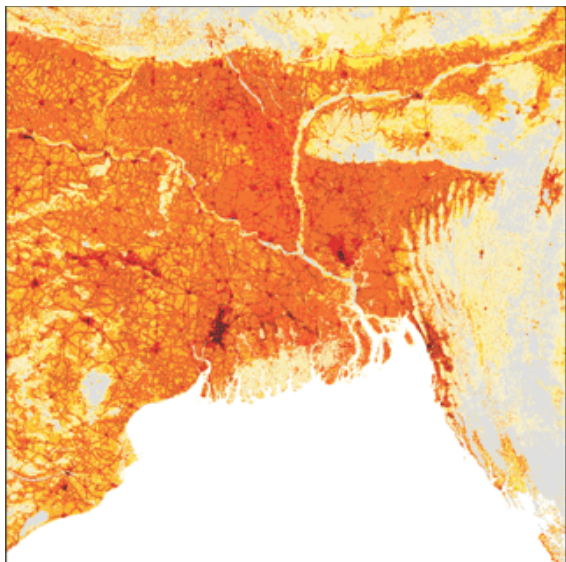
[Rhein Scheldt delta](#)
[World](#)



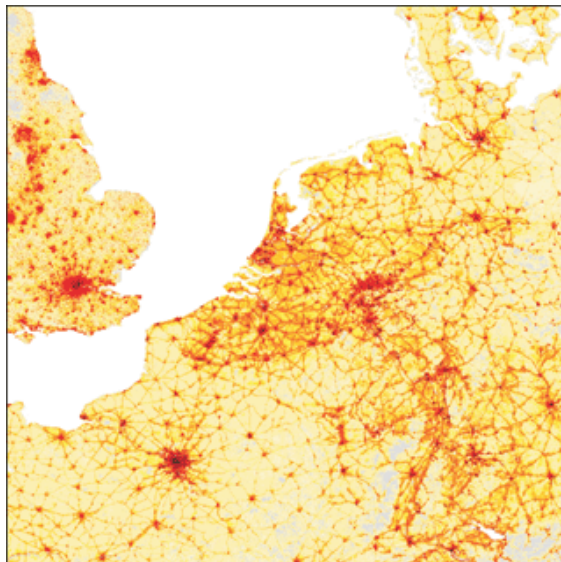
22 urbanised deltas:

- 1 Rhine/Scheldt delta
- 2 Po delta
- 3 Rhone delta
- 4 Nile delta
- 5 Niger delta
- 6 Congo delta
- 7 Euftrat/Tigris delta
- 8 Brahmaputra/Ganges delta
- 9 Irawaddy delta
- 10 Chao Phraya delta

- 11 Mekong delta
- 12 Red river delta
- 13 Pearl river delta
- 14 Yangtze delta
- 15 Yellow river delta
- 16 Tone/Kiso delta
- 17 Snake/Columbia/Fraser delta
- 18 Sacramento delta
- 19 Mississippi delta
- 20 Hudson/Delaware delta
- 21 Amazon delta
- 22 Rio de la Plata/Parana delta



Brahmaputra /Ganges delta



Rhine/Scheldt delta